

## OFFICE BEARERS AND MEMBERS OF COUNCIL 2009-10

### **Chairman**

Matthew Mauchlen, Woodburn, Crieff, Perthshire, PH7 3RG  
Tel: 01764 654364

### **Vice Chairman**

Steven Murray, West Preston, Kirkbean, Dumfriesshire, DG2 8AU  
Tel: 01387 880630

### **Immediate Past Chairman**

Charles Symons, Attonburn, Yetholm, Kelso, Roxburghshire, TD5 8PX  
Tel: 01573 420242

### **Council Members - To retire 2010**

Charlie Bell, 1 Garryside, Blair Atholl, Pitlochry Tel: 01796 481459  
Bruce Gilchrist, Rawburn Farm, Longformacus, Duns  
Tel: 01361 890253

Andrew McNee, No. 1 Woodend Cottage, Armadale Tel: 01501 731946

### **To retire 2011**

David Barr, Milkieston, Peebles Tel: 01721 730213  
Wilbert Girvan, Buckholm Farm, Galashiels Tel: 01896 752185  
James Newell, 6 Park Lane, Ballymoney, Co. Antrim Tel: 02827 665695

### **To retire 2012**

James Colston, Arisaig Farms, Glen House, Arisaig, Tel: 01687 450609  
Giles Henry, Oakwood Mill, Selkirk, TD7 5EZ Tel: 01750 23202  
Leslie Robson, Kilchatton, Toberonochy, Isle of Luing, By Oban, Argyll  
Tel: 01852 314210

### **Fieldsman**

Finlay McGowan, Incheoch Farm, Alyth, Blairgowrie Tel: 01575 560236

### **Breed Development Officers**

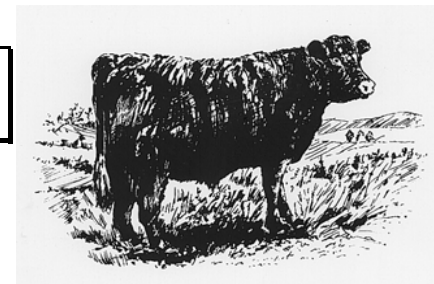
Neil McGowan, Shealwalls, Alyth, Blairgowrie Tel: 01828 633652  
Robert McNee, Dumbuils, Forgandenny, Perth, Tel: 07900 221641

### **Breed Secretary**

Johnny Mackey, Wester Drumlochy, Lornty, Blairgowrie, PH10 6TD  
Tel: 01250 873882 e-mail: secretary@luing-cattle.ndo.co.uk

# *The Silent 'U'*

**Luing Newsletter  
August 2009**



## **DATES FOR THE DIARY – 2009 /10**

### **2009**

**29<sup>th</sup> August**

Open Day – Attonburn, Yetholm, nr Kelso

**31<sup>st</sup> August**

Applications close for inspection of bulls for Premier Sale 2010

**25<sup>th</sup> September**

Entries close for Autumn Sale at Stirling

**15<sup>th</sup> October**

Closing date for Journal advertisements

**24<sup>th</sup> October**

Autumn Sale – United Auctions, Stirling  
Agricultural Centre

**18<sup>th</sup> December**

Entries close for Premier Sale at Castle Douglas

### **2010**

**31<sup>st</sup> January**

2009 born calves to be registered by this date

**4-5<sup>th</sup> February**

AGM, Annual Dinner and Premier Sale,  
Castle Douglas

**23<sup>rd</sup> April**

Entries close for Spring Sale at Dingwall

**19<sup>th</sup> May**

Spring Breeding Sale, Dingwall Auction Mart

### **The Luing Cattle Society Ltd.**

**Breed Secretary: Johnny Mackey, Wester Drumlochy, Lornty,  
Blairgowrie, Perthshire PH10 6TD**

**Tel: 01250 873882 e-mail: secretary@luing-cattle.ndo.co.uk**

## **ATTONBURN OPEN DAY**

All roads lead to Attonburn ([www.attonburn.com](http://www.attonburn.com)) on the last Saturday in August (29<sup>th</sup>) for the next Luings Society Open Day. Details are:

*When:* Saturday 29<sup>th</sup> August from 1pm

*Where:* Attonburn, Yetholm, Kelso, TD5 8PX\*

*Who:* Hosted by Charles & Mary Symons

*What:* Attonburn has a strong reputation for producing top quality breeding stock—particularly Luings cattle and Cheviot sheep. Visitors will have the opportunity to tour the farm to view the stock as well as several live demonstrations including cattle health, direct marketing, bull semen testing and sheep breeding. This is an event not to be missed and will be opened by NFU Scotland President Jim McLaren at 1.30pm.

There will be a beef spit-roast served at the conclusion of the event (4.30pm-ish) as well as a bar. Proceeds from the bar will be donated to the Air Ambulance so bring a driver as it's a great cause. Attonburn has had more rain than it cares to remember in recent weeks but just in case, make sure and bring some wet weather gear.

Accommodation can be booked via [www.yetholmonline.org.uk](http://www.yetholmonline.org.uk)

**\*Directions - Follow signs to Yetholm from Kelso and take the B6401 to Morebattle after Yetholm. Take second left off this road up the Bowmount Water following signs.**

## **BEEF EXPO 2009**

The Society are very grateful to the late Bill Brook, his son Craig and their stockman Gareth Lawton for their superb efforts in representing the Society at the Beef Expo event held in Malvern on 21<sup>st</sup> May.

Council had decided not to attend the event, however, the committed Bill, always keen to promote the breed at every opportunity in the south, offered to represent the Society with some Brookstone Luings. By all accounts it was a very worthwhile exercise and the Society is very grateful to the Brook family for all their work surrounding this event. Jim Cosgrave of Castle Luings, Co. Meath attended the event and was a great help to Bill by manning the stand and helping deal with the high level of interest in the excellent Brookstone cattle on show. Sadly Bill passed away a month later. His enthusiasm for Luings cattle knew no bounds and we are pleased to report that Craig intends to keep the Luings cattle on as a tribute to his father.

## **BULL INSPECTIONS**

Applications for bull inspection close on **31<sup>st</sup> August**. All bulls to be entered for the Premier Sale in Castle Douglas must be inspected and stamped as *Society Approved* for being of a suitable standard.

If the dam of the bull is alive in the vendor's herd, the bull will only be accepted for the sale if that dam has been presented for classification at the time of inspection.

Please note that the minimum scrotal circumference measurement for bulls is 38cm at the time of the sale.

Bull Inspection application forms are enclosed for regular consignors.

Anyone else wishing a form please contact the office. Breeders are encouraged to make application for inspection of bulls that are destined for home use or private sale, and to have their dams classified. Such application should also be received by 31<sup>st</sup> August so that all inspections can be co-ordinated into one programme.

## **MEAT EATING IS UNDER ATTACK!**

*The Carbon Fields* is a recently published book by author Graham Harvey. It is an excellent read and sets out the case for how meat from grass-fed ruminants, can actually help reverse the trend of climate change – you'll not read that too often. As Graham says himself.....

"In my book *The Carbon Fields* I have set out the overwhelmingly positive case for eating meat – particularly beef from animals that spend much of their lives grazing fresh pasture. And far from damaging the environment, well managed grassland may be our best means of averting climate disaster." I can highly recommend this book and as Luings people, it really does give our systems for producing cattle a hefty pat on the back. To get a copy call 01278-683066 or enquiries@grassrootsfood.co.uk

## **HEALTH SCHEMES**

Planning to consign stock to the Premier Sale in 2010? If so, then you **MUST** be a member of a CHeCS (Cattle Health Certification Standards) accredited health scheme as decided by Council in March 2009. Don't delay and contact one of the CHeCS licensed providers today – details below:

<b>Provider</b>	<b>Phone no.</b>
• <i>Advance Cattle Health Scheme</i>	01132 507556
• <i>AFBI Cattle Health Scheme</i>	02890 525749
• <i>Biobest Herdcare</i>	0131 440 2628
• <i>HI Health</i>	01856 878293
• <i>Premium Cattle Health Scheme</i>	01835 822456

## **ROYAL ULSTER SHOW**

Another first for the Luings when we attended the Royal Ulster Show for the first time in May. There are around a dozen herds of Luing cattle in the province now with a growing demand as many will have witnessed with the strong support at recent sales from Northern and Southern Irish buyers. Hence it was a fairly straight-forward decision to accept the invitation to attend. James Newell, our Northern Irish director, duly set about organising the whole event. Two 14mth old bulling heifers were supplied by Robin Wells of the Laganview herd in Co. Armagh and off they went to the show. Our stand was in an ideal location for the three day event which saw good numbers of farmers wandering past the stand and admiring the excellent bulls from Laganview. We are very grateful to the Northern Irish breeders who put so much effort into setting up, attending and dismantling the stand for the Luing Society. Particularly James, Robin, Drew Peoples, Alan Crockett and Lee Evans. Matthew Mauchlen and Andrew and Lorna McNee also travelled across to represent the Society.....as did the Secretary of course (never one to miss an opportunity to get back to my roots!) The RUAS was a very worthwhile event for us to attend, especially given the several names now added to our database requesting catalogues in advance of future Society sales.

## **REGISTRATIONS**

All calves born in 2009 must be registered by 31<sup>st</sup> January 2010. More than half of breeders are registering on-line presently and find it much easier than doing it manually. Any difficulties can be sorted out by phoning the office where what you are doing can be accessed and most problems solved very quickly! Please don't hesitate to get in touch if you need any help or to be reminded of your password.

## **WHERE ARE YOUR STEERS?**

We have re-opened the file on beef marketing following some recent investigations on establishing a Luing beef brand. One of the big questions we have to answer before getting over the threshold of any potential retailer is on our supply chain – i.e. where do all the pure Luing steers go? Obviously due to the extensive nature of our production systems the majority of breeders sell steers through the store ring and hence they are dispersed far and wide. We would very much appreciate if you could get in touch with the office to let us know who you sell them through and ideally who buys them. We cannot progress this issue until we know how many cattle we could potentially supply into a brand so we look forward to hearing from you at your earliest convenience.

## **ROYAL HIGHLAND SHOW**

Another successful show for the Luing Society with a very busy stand over the four days found in the usual spot on Avenue 15 of the showground. As always, the right stock attracts the right people, and an impressive 3yo Sim-Luing cow with a Limousin heifer calf at foot from Ted & Anne Fox of College Luings, nr Wooler did the trick here. Once in the trap, I mean stand, visitors could then admire three 14mth bulls (averaging 460kg) from Charles & Mary Symons of Attonburn Luings, nr Kelso. All of the stock performed admirably and settled in very well for the duration of the event. Several positive enquiries were made and even some deals done on the stand during the show. It was pleasing to see so many members take advantage of the facilities on offer and join us for a catch-up, sit-down or cuppa or all three! Thanks go to the many directors and members who gave up some of their time to help man the stand. In particular to Charles Symons, Bruce Gilchrist and Matthew Mauchlen for setting up and to Neil McGowan and Helena Mauchlen for joining Matthew, Charles and Johnny in the dismantling process.

## **SCOTTISH BEEF FAYRE**

The Society exhibited at the Scottish Beef Cattle Association's biannual Beef Fayre event, held in Fife this year. Given the very commercial emphasis of the event Council were keen to promote the Sim-Luing side of our story. A 9yo Sim-Luing cow with an impressive Charolais heifer calf was kindly supplied by the McNee family. The event itself suffered from being quite close after the RHS (1<sup>st</sup> July) however those attending would have enjoyed an excellent farm tour at Pitlochrie Farm, Gateside.

## **MEMBERSHIP SUBSCRIPTIONS**

There are still a number of annual membership subscriptions outstanding. Please take a moment to ensure you have paid your 2009 subscription and if not, send a cheque for £34.50 into the office at your earliest convenience .....thanks in advance!

## **NEW WEBSITE**

29<sup>th</sup> August will live long in the memory (hopefully) as being a great open day for the Luings but also as the day the new Society website will be launched. The new site which carries a modern new look, will contain a lot of useful information for both members and farmers generally interested in finding out about Luing cattle. The address remains the same – [www.luingcattlesociety.co.uk](http://www.luingcattlesociety.co.uk).

## **WELCOME NEW MEMBERS**

A warm welcome to the new members who have joined since last Aug:

- David & Lisa Steel, Meadows Farm, Cleish, Kinross
- Jimmy Cosgrave, Newcastle House, Enfield, Co Meath
- Thomas Cosgrave, Cloneycurry, Rathmolyon, Co Meath
- Hilary J Birnie, Guisachan Farm, Tomich, By Cannich, Beaully
- Randal Wilson, Loanleven, Almondbank, Perth
- Nigel Forster, Milton of Larg, New Luce, Newton Stewart
- Fraser McLauchlan, The Sidings, Ballahulish, Argyll
- Jeff Norrie, Bethesda, Achnairn, Shinness, Lairg, Sutherland
- John Kitchen, Lower Isle Farm, Isle Lane, Oxenhope, Keighley
- Robert McCarlie, Wester Hassockrigg Farm, Harthill, Shotts
- Neil Robson, Town Shields, Haydon Bridge, Hexham
- Lord Johnstone, Raehills Farms Ltd., St Ann's, Lockerbie, Dumfriesshire
- J. Bernard Ogden, Cornfield House, Eldroth, Austwick, Lancs
- Peter Alexander, Blackhillock, Glenbuchat, Strathdon
- John Skea, Darroch House, East Mains Farm, Auchterhouse
- Colin Moore, Honeygot Farm, Wootton, New Milton, Hampshire
- Paddy Crerar, Newmains Farm, Dunbar, East Lothian
- Douglas Gray, Boreland Farm, Peebles
- Michael Halligan, Nether Stewarton Farm, Peebles

## **STOCK FOR SALE**

The office regularly gets enquiries from farmers looking to buy Luing cattle privately. Whilst our policy will always be to encourage these buyers to purchase at official Society Sales, occasionally this will not suit. Therefore please let me know of any stock you have available for sale, and equally as important, once you've sold them tell me so I can adjust my list. Likewise, if there is anything in particular you are looking for then get in touch. Stock for sale privately will be listed in future newsletters and have a dedicated page on the new website.

## **36<sup>TH</sup> AUTUMN BREEDING SALE**

Conditions and entry forms are enclosed for regular consignors for the next autumn breeding sale due to take place on Saturday 24<sup>th</sup> October from midday at United Auctions new Stirling Agricultural Centre. Please read the conditions of entry carefully – entries will only be accepted if all UK tag numbers are advised at the time of entry and also if animals are lotted in the order that they are to be sold on the day (bracket multiple lots please!). Anyone else wishing entry forms should contact the Luing office. Please note that entries close

on **25<sup>th</sup> September**. This date will be strictly adhered to so that catalogues can be circulated to all interested parties in good time.

## **DINGWALL SALE 20<sup>TH</sup> MAY 2009**

The inaugural sale of Luing cattle in the north of Scotland at Dingwall Auction mart on 20<sup>th</sup> May witnessed a very strong demand from new buyers. A select entry of 49 head of cattle was totally cleared with 35 pedigree Luing bulling heifers selling to average £1,542. Pedigree Luing bulling heifers were bid to 2,050gns for the first pair of heifers offered from the Cadzow Brothers herd on the isle of Luing. The top price was paid by Paddy Crerar from East Lothian who was setting up a Luing herd – he went on to buy a further nine heifers at the sale. Cadzow Brothers averaged £1,911 for 10 sold. The strong trade also saw consignments from J.J. Cameron of Blair Atholl who sold five to average £1,733; F.S. Renwick from Ullapool who sold six to average £1,435; Welbeck Scottish Farms from Ousdale who sold eight heifers to average £1,326 and R.J. Wotherspoon from Aberfeldy who sold six to average £1,129. Two pedigree Luing cows were also forward with Graeme McRae's 8yo Westwater-bred cow selling for 1,000gns. Angus McCall's five year old Culmailly-bred cow was sold for 980gns.

Next year's sale will include an inspection to Premier Sale standards.

## **TRANSFER FEES – UPDATED POLICY**

The policy for bull transfer fees has changed following the July Council meeting. Previously bulls sold privately between members' herds were subject to a transfer fee of £100. Following an appeal by a member, and in recognition of the number of smaller Luing herds recently being established, the transfer fee will now have two tiers with a cut-off at 30 breeding cows (as listed on each herd's most recent annual return). Herds from 1-30 cows will pay a per cow transfer fee of £2/cow with a minimum fee payable of £25. Those herds of 31+ cows will continue to pay £100. This change in policy takes effect immediately. The transfer fee for females remains at £10.

## **MACAULEY LAND USE RESEARCH INSTITUTE TRIAL**

MLURI are repeating a previous trial comparing the grazing habits of breeds of cattle. Luings came out well in the previous trial due to the range of their grazing habits. Anyone with cows (must be sound for teeth and legs) that have reached the end of their breeding lives, should contact George Corsar on 07730-211739. MLURI will pay at least market rate for these cull cows.

## **JOURNAL 2010 - No.43**

The 2010 journal is starting to be pulled together and as always we welcome any stories (big or small) to do with Luing cattle, people or the beef industry in general. So if you've got a burning desire to put something down on paper

then get in touch soon! Copies of the 2009 version are becoming as rare as an honest MP so if you need any more let me know as soon as possible.