

HOTEL ACCOMMODATION FOR PREMIER SALE

Details of some of the hotels and B&Bs with rooms available (at the time of writing) for February in Castle Douglas are listed below. Please make your bookings directly with the hotel of your choice:

Douglas Arms Hotel	Tel: 01556-502231
Imperial Hotel	Tel: 01556-502086
Kings Arms	Tel: 01556-502626
Market Hotel	Tel: 01556-505070
Urr Valley Hotel	Tel: 01556-502188

ACTION - Registrations

Please remember that registrations of all calves born in 2011 must be received by the office no later than **31st January 2012**. Late registrations carry an additional charge. If you complete registrations on paper and have mislaid your birthing summary form and/or completion instructions, a phone call to the office will ensure that replacements are sent to you. If you would like to register calves on-line contact the office for a username and password. **Remember charges for paper-based registrations increased last year; it is cheaper (by 50p/cow) to register on-line.**

Members are reminded to double-check entries before clicking the mouse one last time or sealing the envelope as presently too much time is still spent changing details such as colour, polled, tag numbers and so on for certificates in advance of official sales!

TRANSFER FEES - a reminder

Bulls The transfer fee for all bulls sold privately is £100+VAT for herds of 31+ cows or £2/cow for 30 cows & under (with a minimum fee payable of £25+VAT). This fee is normally invoiced to the buyer and must be settled before any calves by that bull can be registered.

Females The transfer fee for all females sold privately is £10 per head + VAT., again normally invoiced to the buyer unless told otherwise.

General point Please make sure that certificates are sent back to the office asap after a private sale.

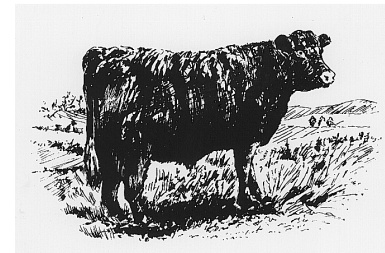
There is no transfer fee for cattle bought at official Soc. sales.

ANNUAL SUBSCRIPTIONS

A change for this year's subscription was the issuing of renewal notices as opposed to invoices (for several reasons that I won't bore you with) – receipts will be issued once payments have been processed in the office. You will have noticed the VAT rate of 20.0% hence subs have increased to **£36.00**. Please settle this at your earliest convenience.

The Silent 'U'

Luing Newsletter
Winter 2011/12



The Chairman and Board of Directors extend Very Best Wishes to all Members and Friends for 2012 and look forward to welcoming you to Castle Douglas in February for the 47th Premier Sale.

Wallets Marts, Castle Douglas – 10th February 2012
52 In-Calf Heifers 174 Bulling Heifers 26 Bulls

252-head sees this as the biggest sale in almost 40 years (1974 had more entered): in-calf heifers are up by 3, bulling heifers by 25 with bulls slightly back by three.

The beef sector has seen unprecedented high prices for breeding, store, prime and cull stock over the past year. Whilst high cull values haven't fully fed back through to the breeding heifer market, we have enjoyed a very good trade at all our official sales in 2012 when 227 pedigree bulling heifers traded to average £1,239. This is all very well but we still need to attract buyers to the sale to clear such a high entry so look out for some big bold adverts in the press in the lead up to the sale.

All bulls entered for the sale have once again been inspected and passed as Society Approved; the dam classification scores are included in the catalogue. All cattle will have a pen card displayed from their health scheme provider and signed by a veterinary surgeon. Again all animals forward will be BVD-vaccinated.

There is plenty of time to do some homework and consignors will welcome a pre-sale visit or a chat on the phone if you would like further background information about either pedigree or health status.

46th ANNUAL GENERAL MEETING

The 46th Annual General Meeting of the Luing Cattle Society will be held in the Urr Valley Hotel, Castle Douglas on Thursday 9th February at 1730hrs. The Urr Valley Hotel is situated on the outskirts of Castle Douglas, on the left hand side as you approach from Dumfries, and is clearly signed. Appropriate papers are enclosed and include: Agenda, Minutes of the 45th AGM, Annual Report and Accounts for the Year ended 31st October 2011 - please bring these to the meeting with you.

The Annual General Meeting gives Members of the Society the opportunity to have their say and be involved in general discussion. Please don't miss the chance to put your point, ask a question or raise any issue of interest.

ANNUAL DINNER – Book your ticket!

The Annual Dinner will be held on the evening prior to the Premier Sale in the Urr Valley Hotel, Castle Douglas at 1930hrs.

A three course meal will be served and we look forward to a good social evening with our guests and to meeting lots of old and new members and friends. Please advise the office of your ticket requirements. £20 per head will be collected during the meal. **Dinner tickets are strictly limited and are going quickly.** Please make bookings no later than 27th January to the office by email (secretary@luingcattlesociety.co.uk) or phone (01250-873882). **Book now to avoid disappointment.** Our **guest speaker** this year is Mr Dougie Fleming from Coulter, Biggar.

CARRS BILLINGTON PHOTOGRAPHIC COMPETITION

2012 will be the first year of our new Premier Sale sponsors Carrs Billington Agriculture sponsoring the annual photographic competition. We look forward to marking this with plenty of entries in the sections:

1. **Stock**
2. **Society Events**
3. **Humorous**

Note entries are usually in the form of photographs but may include an anecdote, cartoon, poem or anything related to Luing cattle or Luing people. Free entry – generous prizes will be supplied by Carrs Billington – please look out your entries and bring them to the AGM. Entries should be laid out immediately following the AGM and will be judged just before dinner. Sticky labels will be available for naming and classifying photographs - be sure to write your name on the reverse. Entrants are requested to leave the photographs on show for at least an hour after dinner so that guests have the opportunity of viewing them.

RAFFLE

The customary raffle will be held during the dinner with this year's proceeds to be donated to the RSABI. Ashley Hogg (RSABI officer for South Scotland) will give a short presentation on their work at the AGM to give members some idea on the very worthy work of the organisation. Prizes for the raffle will be welcomed.

PREMIER SALE – Friday 10th February 2012

Sale Catalogue is enclosed – should you wish any further information or know of anyone who would like a catalogue, please do not hesitate to contact the office or direct them to the website. Please bring your catalogue to the sale with you – they are costly to produce and numbers are limited; we ran out last year so have ordered a bigger run this year. Catalogue is also available on the web www.luingcattlesociety.co.uk Cattle will be allowed into the market on Wednesday morning. **Bulls** must be penned in the market by Wednesday evening and **heifers** by 12noon on Thursday, 9th February so that bulls can be inspected no later than 1030 and heifers by 1300. Bulls will be weighed, measured at the shoulder and have their scrotal circumference measured. This information will be displayed at the pen alongside the dam classification card. Bulls will then be walked along to a dedicated area to have their picture taken by renowned livestock photographer Wayne Hutchinson. Handlers are reminded to wear white coats for these pictures. Vendors are reminded that passports must accompany all animals and that you are responsible for ensuring that each animal reaches the ring with the correct ear tags. **Judging of heifers** will be at 0900 on Friday 10th February (by Dave Stanners of Tynedale Luings, Knowsley Park, Merseyside) followed by the parade of bulls at 1030 and the sale will commence at 12noon. **Upset price** You are reminded of the upset price of 1,500gns which has been introduced for the sale of bulls.

NBA Warranty All cattle will be sold under the National Beef Association terms and conditions of sale incorporating bull breeding and female breeding warranties. I would particularly draw your attention to the conditions regarding warranty extension– see sale catalogue for details.

JOURNAL 2012 (no.45)

We hope that you are enjoying the 2012 Annual Journal – please use this as a promotional tool for the breed. If you think that it would help you to market your cattle, pick up a few extra copies from the Breed Secretary when you are in Castle Douglas or better still, contact the office in advance and a quantity can be put aside for you.